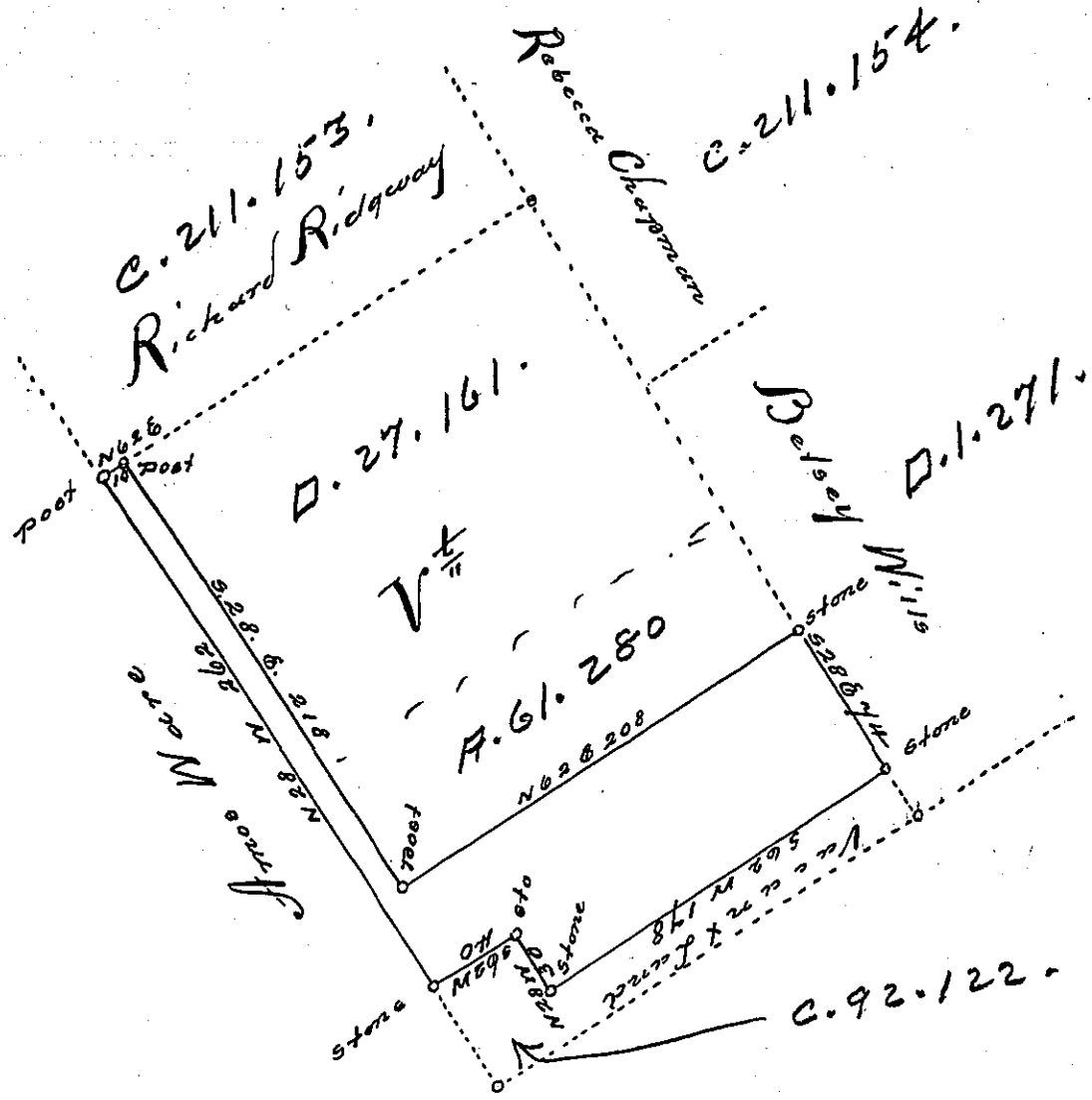


B-Grove-PIKE



By Virtue of a Warrant dated the 18th day of April 1844. Surveyed the 9th day of May 1844. To Daniel R. Butler the above described tract of Land Situate in the Township of Lachawawen, adjoining land surveyed to Richard Ridgway, in the County of Pike, Containing one hundred acres one hundred thirty four perches and allowance of six pr. Ch. for Roads &c.

To Jacob Garrade Esq. *J. H. Wallace D. J.*
 Surveyor General of Penn^a

Examined and approved by me

To John Laporte Esq. *John W. Cross D. J.*
 Surveyor General of Penn^a

IN TESTIMONY that the above is a copy of the original remaining on file in the Department of Internal Affairs of Pennsylvania, made conformably to an Act of Assembly approved the 16th day of February, 1833, I have hereunto set my Hand and caused the Seal of said Department to be affixed at Harrisburg, this second day of January, 1900

James W. Latta
 Secretary of Internal Affairs.